

A Decade of Linking the Autism Community & Researchers

54,251 participants*

21,659 individuals with autism spectrum disorder (ASD)

14,869 children

6,790 adults (over age 18)

Families from all **50 states**

18,000 moms

4,000 dads

+ The District of Columbia, American Samoa, Northern Mariana Islands, Guam, Marshall Islands and Palau.

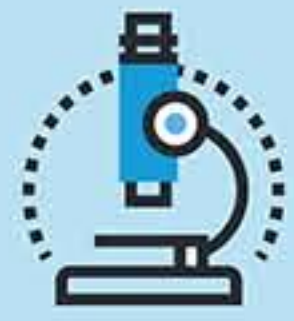
THE NATION'S PARTICIPANT POWERED RESEARCH NETWORK FOR AUTISM.



JOIN IAN



CONTRIBUTE DATA



"POWER" NATIONAL RESEARCH EFFORTS



Research

Connects individuals with ASD and their families to researchers nationwide to accelerate the pace of autism research.



500 research studies



50 scientific research publications

A few of our findings...

50%

Half of children with autism wander and bolt from safe places; *first to scientifically validate that wandering is a critical safety issue for the autism community*

1ST

First online randomized clinical trial in autism, examining the use of omega-3 fatty acids, demonstrated the feasibility of this research method in children with autism

5+

Most children with autism are on 5+ different treatments/therapies at any given time; parents report 400 total treatments in use, at an average cost of \$500/month

Policy

- ✓ Data collected from IAN families contributed to the restructuring of DSM 5, the manual used in the diagnosis and labeling of autism. The DSM committee used **three IAN studies to inform the DSM 5 revisions**.
- ✓ Data collected from IAN families helped make possible new state and federal legislation aimed at **reducing injury and improving safety of children with ASD** who wander.
- ✓ Our team is **facilitating and advocating** to help autism families get access (and own!) their personal electronic health records/health information.

Community

1,000 PARTNERSHIPS THROUGHOUT ASD COMMUNITY

In collaboration...

2006

Kennedy Krieger Institute

AUTISM SPEAKS

NIH

pcori

SIMONS FOUNDATION

2016

BUILDING A TRUST-WORTHY ONLINE COMMUNITY RESOURCE

6.75M 

visits from people in 170 countries*

1,000 

articles with evidence-based information*

JOIN IAN FOR THE NEXT DECADE TO:

improve the lives and health of those with autism
help direct the future of autism research
by telling us your priorities for research

